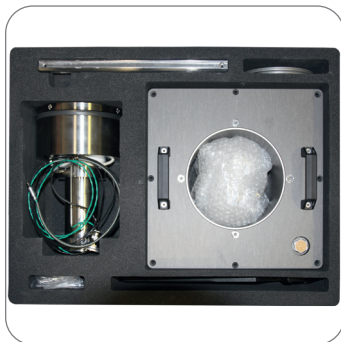


High-Temp. Substrate-plate heating for SLM®280^{HL}



This new retrofittable heating device does enable temperatures up to 550°C on the substrate-plate.

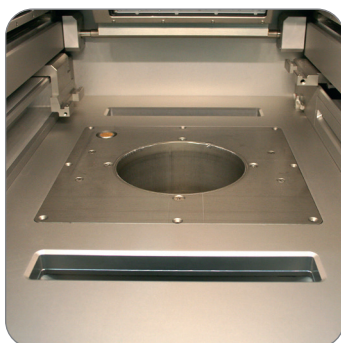
Potential applications are production of Titanium parts without internal stress or cracks. Furthermore future applications in R&D are a target area for the increased heating temperature.



The modular design concept of this option does enable a quick mounting similar to the installation of a reduced build-plate in the SLM 280 HL machine.

After this option is installed parts up to a height of 100mm and a diameter of 90mm can be produced.

All necessary parts and components will be delivered in a compact tool case



When retrofitting this option at older SLM-machines the mounting-plate inside the build chamber might have to be replaced as well. Please contact the SLM-service with the serial no. of the machine to check.

